

DRAWING NUMBER

4986

SAFCD PRODUCTS • NEW HOPE, MINNESOTA  
REDUCED BY PART NUMBER 0552

PROFESSIONAL SEAL OF THE LAND SURVEYOR

DRAWING NUMBER

SAFCD PRODUCTS • NEW HOPE, MINNESOTA  
REDUCED BY PART NUMBER 0552

PROFESSIONAL SEAL OF THE LAND SURVEYOR

DRAWING NUMBER

SAFCD PRODUCTS • NEW HOPE, MINNESOTA  
REDUCED BY PART NUMBER 0552

PROFESSIONAL SEAL OF THE LAND SURVEYOR



1. COPYRIGHT 2005, RONALD MULLENIX, P.L.S. ALL RIGHTS RESERVED.
2. UNAUTHORIZED ALTERATION OR ADDITION TO A SURVEY MAP BEARING A LICENSED SURVEYOR'S SEAL IS A VIOLATION OF SECTION 7208, SUB-DIVISION 2, OF THE NEW YORK STATE EVIDENCE LAW.
3. ONLY COPIES FROM THE ORIGINAL OF THIS SURVEY MARKED WITH AN ORIGINAL OF THE LAND SURVEYOR'S PROFESSIONAL SEAL SHALL BE CONSIDERED VALID TRUE COPIES.
4. CERTIFICATIONS INDICATED HEREON DENY THAT THIS SURVEY WAS PREPARED IN ACCORDANCE WITH THE BEST PRACTICES OF LAND SURVEYING AS SET FORTH BY THE NEW YORK STATE ASSOCIATION OF PROFESSIONAL LAND SURVEYORS INC. SAID CERTIFICATION SHALL BEIN ONLY TO THE PERSON FOR WHOM THE SURVEY IS PREPARED, AND IS NOT BINDING TO THE TITLE COMPANY, CONSTRUCTION AGENCY AND LENDING INSTITUTION LISTED THEREON, AND TO THE AGENTS OF THE LENDING INSTITUTION. CERTIFICATIONS ARE NOT TRANSFERABLE TO ADDITIONAL INSTITUTIONS OR SUBSEQUENT OWNERS.
5. THE LOCATION OF UNDERGROUND IMPROVEMENTS OR ENCROACHMENTS, IF ANY EXIST OR ARE KNOWN HEREON, ARE NOT COVERED.
6. THIS MAP MAY NOT BE USED IN CONNECTION WITH A "SURVAY AFFIDAVIT" OR SIMILAR DOCUMENT STATEMENT OF NECESSITY TO OBTAIN TITLE INSURANCE FOR ANY SUBSEQUENT OF FUTURE OWNERS.

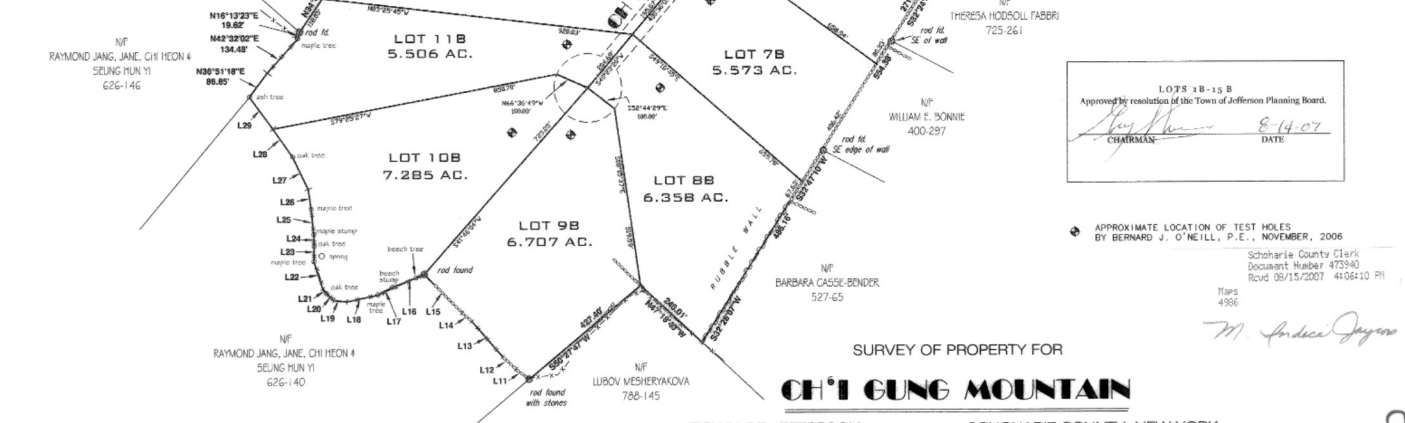
DATE: 3/1/07  
 THIS WILL CERTIFY THAT ALL TAXES ARE PAID UP TO AND INCLUDING THE TOWN & COUNTY TAX DUE IN JANUARY 2007.  
 4857100260  
 SCHOHARIE COUNTY TREASURER  
 BY: [Signature]

Taxable Status Date: 3/1/07  
 Town of: Jefferson  
 Tax Map #: 178-2-2111  
 Account #: 4857100260  
 Assessed to: Castle Mountain Music Ltd  
 Complete:  Partial:

LINE	LENGTH	BEARING
L11	48.32	N82°46'04"W
L12	93.20	N46°57'44"W
L13	136.04	N41°17'07"W
L14	37.76	N49°11'13"W
L15	157.24	N44°40'32"W
L16	101.15	S68°37'06"W
L17	48.12	S62°38'22"W
L18	93.86	S77°49'58"W
L19	38.12	N83°44'58"W
L20	29.34	N46°48'27"W
L21	17.53	N38°01'53"W
L22	83.17	N17°52'30"W
L23	44.62	N01°01'57"E
L24	33.82	N01°38'16"W
L25	73.64	N05°45'46"W
L26	59.41	N08°30'26"W
L27	103.70	N25°45'26"W
L28	100.78	N32°16'13"W
L29	116.03	N36°32'46"W

LINE	LENGTH	BEARING
L1	87.21	S33°27'32"E
L2	92.35	S38°07'41"E
L3	97.47	S30°18'38"E
L4	59.31	S37°38'34"E
L5	47.47	S14°54'21"W
L6	92.30	S48°25'31"E
L7	322.20	S48°10'33"E
L8	45.71	S43°59'41"E
L9	28.26	S35°21'39"E
L10	26.75	S07°59'10"E

CURVE	LENGTH	RADIUS
C1	56.06	209.91
C2	107.48	275.00



LOTS 18-15 B  
 Approved by resolution of the Town of Jefferson Planning Board.  
 [Signature]  
 CHAIRMAN  
 DATE: 8-14-07

APPROXIMATE LOCATION OF TEST HOLES  
 BY BERNARD J. O'NEILL, P.E., NOVEMBER, 2006  
 Schoharie County Clerk  
 Document Number: 473940  
 Revd 08/15/2007 4:08:10 PM  
 Maps 4986  
 [Signature]

**CH'I GUNG MOUNTAIN**

TOWN OF JEFFERSON SCHOHARIE COUNTY, NEW YORK

DATE: OCTOBER 3, 2005 SCALE: 1"=200'  
 REV. OCTOBER 27, 2005 (SUBDIVISION)  
 REV. AUGUST 11, 2006 (COMBINE LOTS 1&3 INTO LOT 1A)  
 REV. DECEMBER 4, 2006 (LOTS 1B-17B)  
 REV. APRIL 25, 2007 (LOT 1)  
 REV. AUG. 8, 2007

total area: 116.459 AC.